

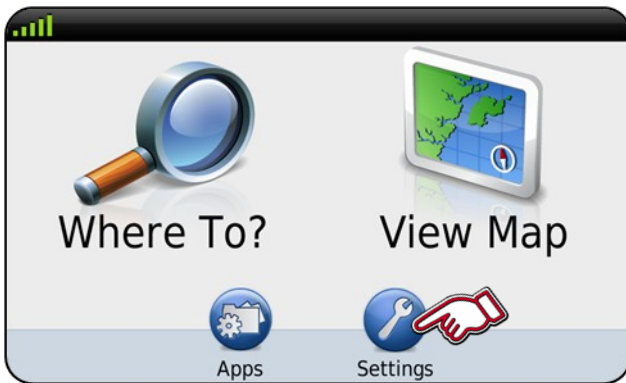
Honda
CONNECT

Garmin Navigation Map Update

Garmin Navigation Map Update

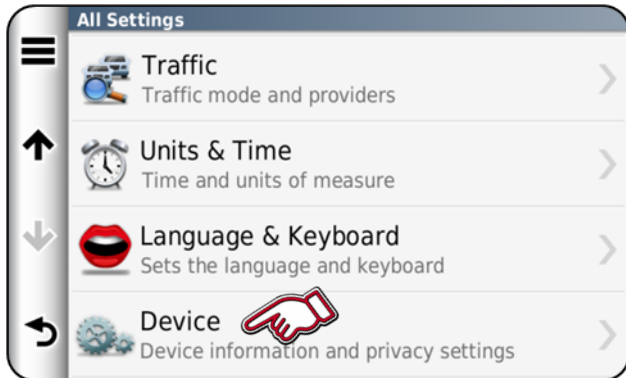
Contents:

<u>Vehicle data retrieval</u>	<u>3</u>
<u>Garmin Express</u>	<u>4</u>
<u>Vehicle map upload</u>	<u>8</u>
<u>Checking map version</u>	<u>9</u>

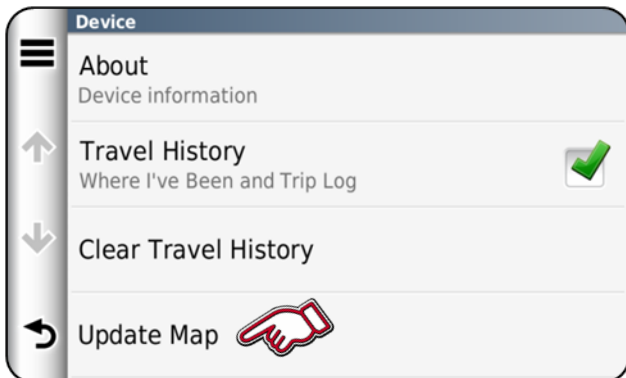


1. Plug the USB drive into the cars USB port.

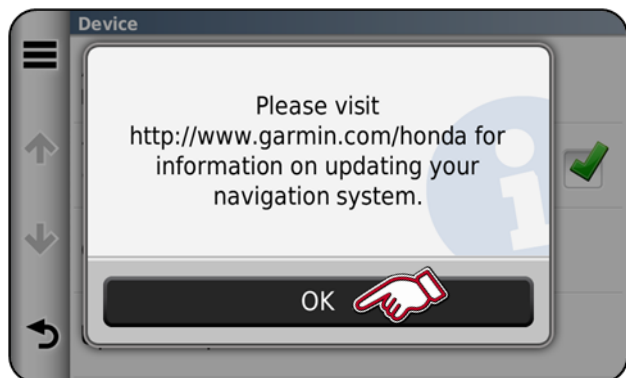
Select "Settings" in Navigation Home screen.



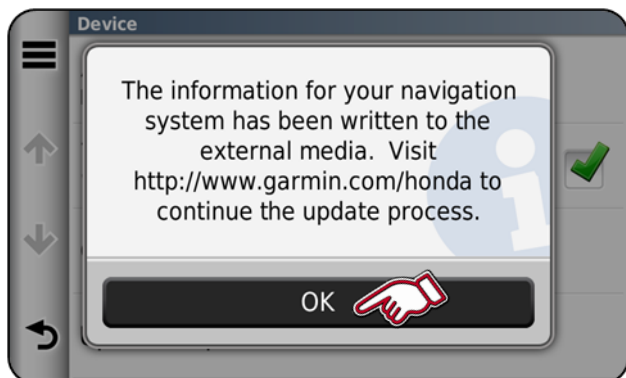
2. Select "Device"



3. Select "Update Map"

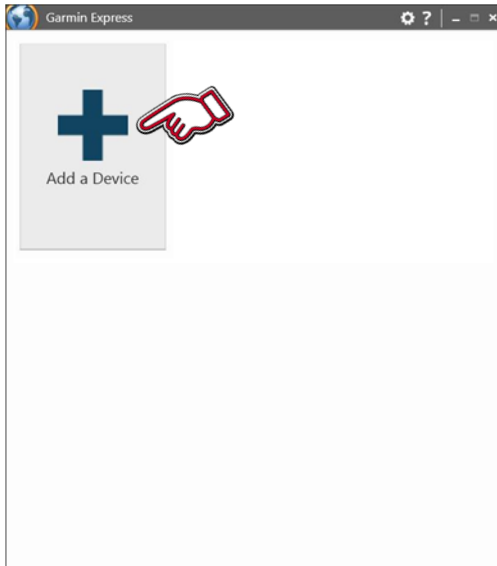


4. Select "OK"



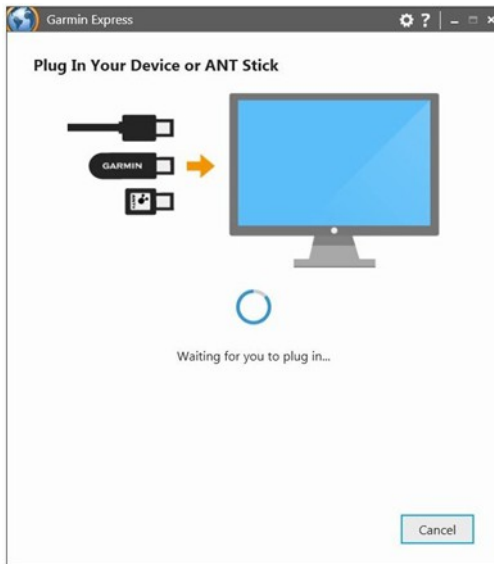
5. Select "OK"

Remove USB drive from USB port.

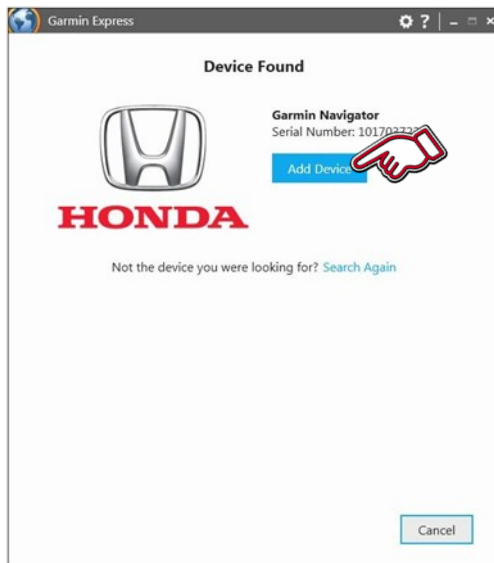


1. Start Garmin Express.

Select "Add a Device"

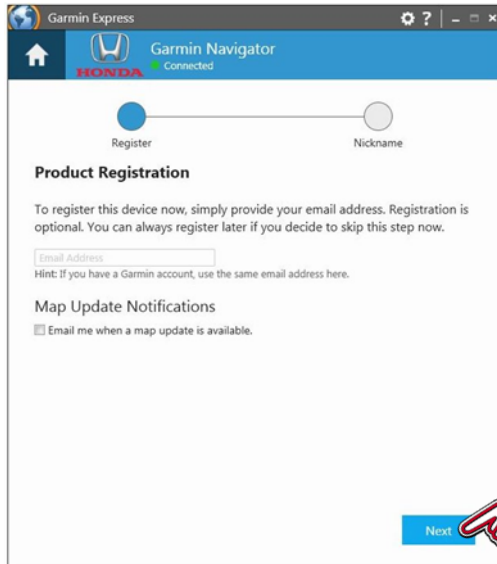


2. Plug the USB drive into the computers USB port.



3. Device found.

Select "Add Device"



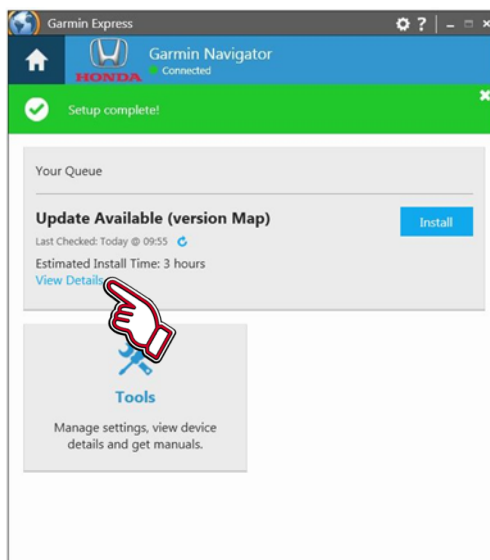
4. If the customer's email address is known, then this can be added to register the unit. Map Update Notifications can be ticked to inform them of the next map update.

Select "Next"

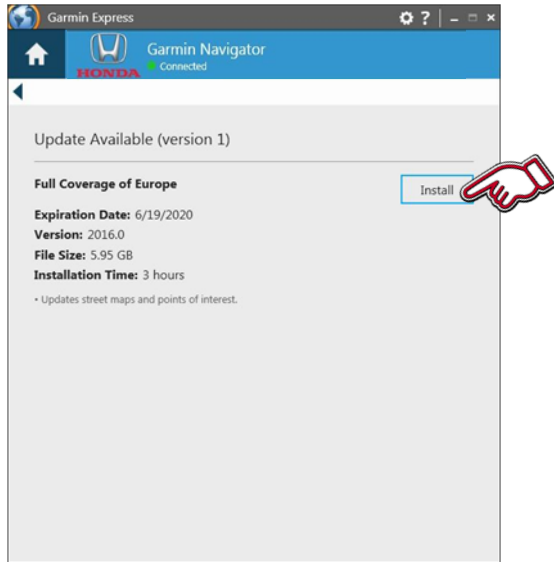


5. A Nickname can be entered e.g. Registration number or VIN could be used. So a vehicle can be identified at a later date.

Select "Finish"

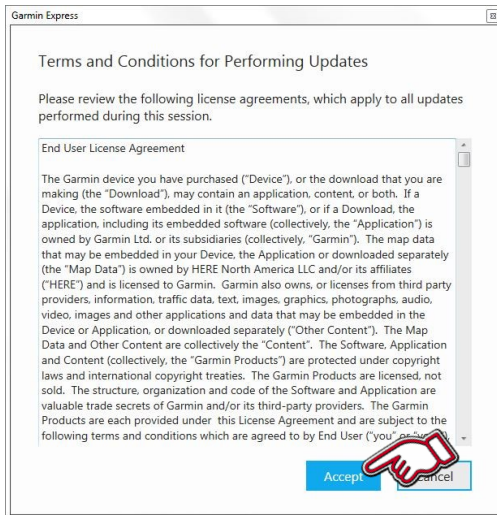


6. Available updates are confirmed. If available then information about that update can be found by clicking "View Details" or the install process can be started from here by clicking the "Install" button.

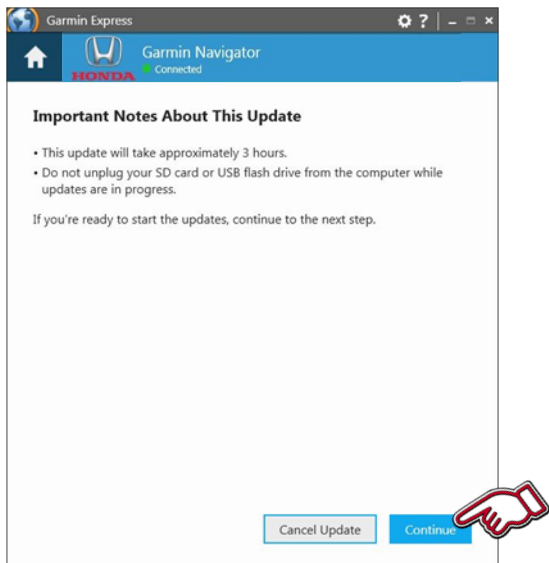


7. Available update information is shown.

To Install Select “Install”

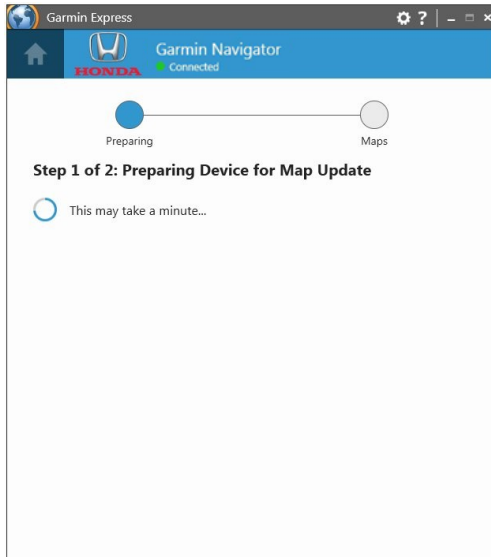


8. Read and accept the terms and conditions for performing updates by selecting “Accept”



9. Important notes about the update are shown.

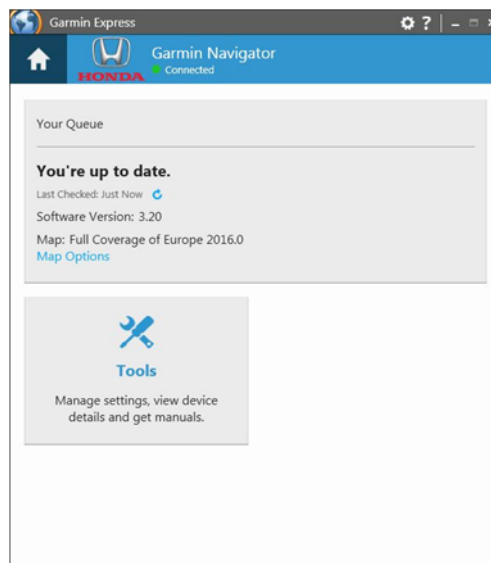
Once ready Select “Continue”



10. Update download will begin.



11. Building the map and Copying files on to the USB drive.



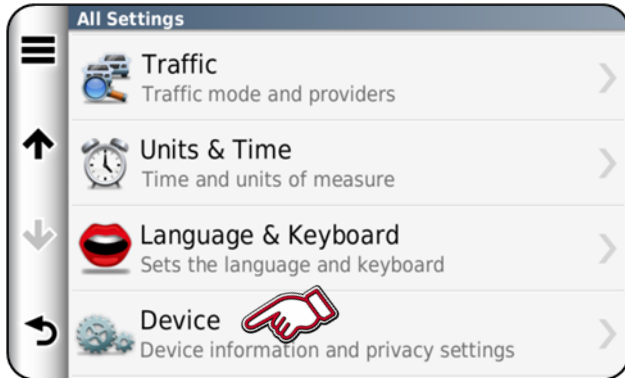
12. Update Process complete.

Remove the USB drive from the computer.

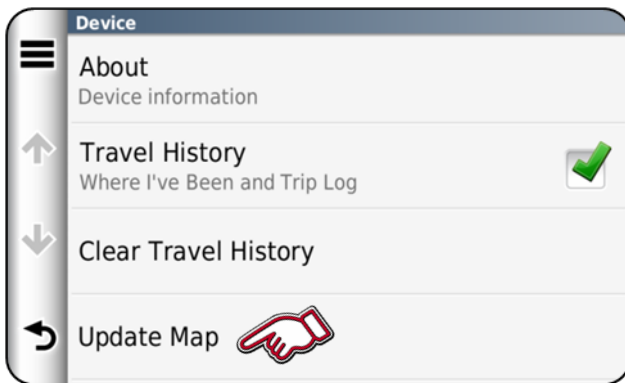


1. Plug the USB drive into the cars USB port.

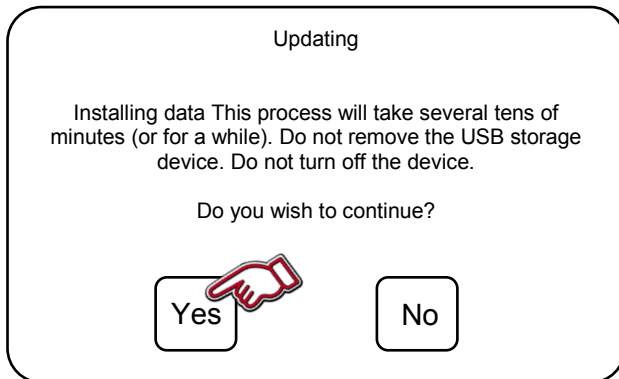
Select "Settings" in Navigation Home screen.



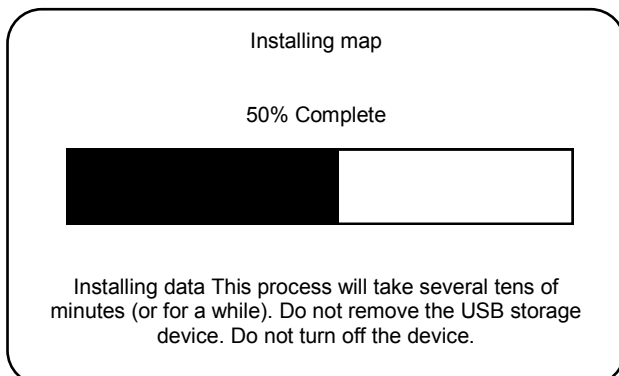
2. Select "Device"



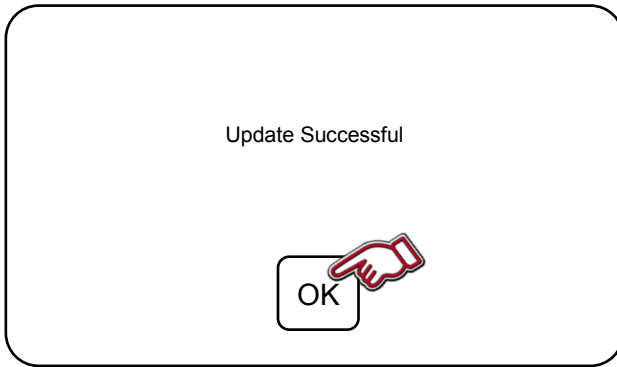
3. Select "Update Map"



4. Select "Yes" to continue.



5. Installing the updated map.



6. Update completed.

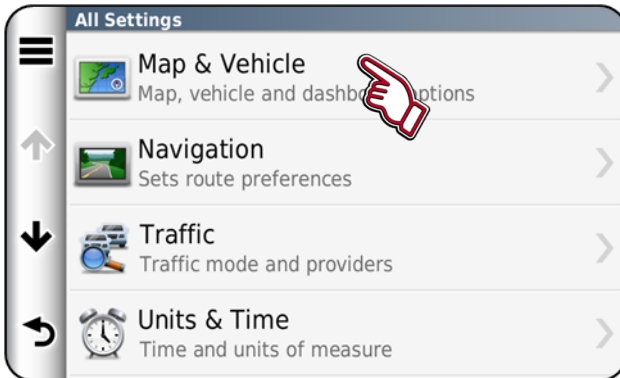
Select "OK" to finish.

Remove the USB drive from the USB port.

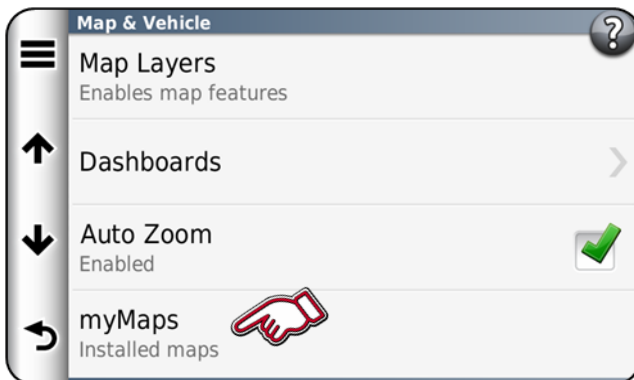


Checking Map version.

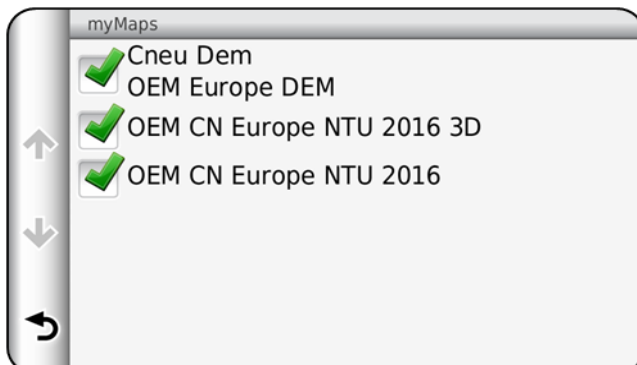
1. Select "Settings"



2. Select "Map & Vehicle"



3. Select "myMaps".



4. Map region and version is shown.

